

Niagara's Great Gorge Trip

THE FALLS and
WHIRLPOOL RAPIDS ROUTE
Niagara Falls, New York

Niagara's Great Gorge Trip

The Falls and Whirlpool Rapids Route

There Is No Automobile Road Through the Gorge

NIAGARA cannot be seen in a day; it is an ever-shifting spectacle. The changing light of every hour unfolds some new beauty or reveals an added charm. The glorious grandeur of Niagara baffles both brush and pen. Nothing comparable to it exists in the heart of the civilized world.

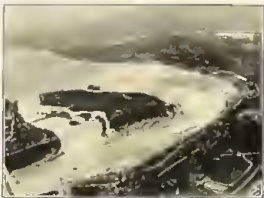
The traveler afoot, or in automobile, sees but a part of this magnificent work of nature. One may stand at the brink of the Fall, with hardly a quickened heart-beat, and watch the ceaseless flow of the stream as it slips over the edge of the cliff, but, in the Gorge below, he will gaze in awe at the tumbling torrents that crash at his feet.

The visitor to Niagara may saunter along the shore of the upper river, about Goat Island, or watch with fascination the wide sweep of the stream as it cascades over the eroded limestone benches that form the Upper Rapids; but to stir the soul and rouse the reverence, one must seek the lower river's edge in the deep-cut Gorge and top the dizzy heights of the cliff above the swirling Whirlpool.

To see all of Niagara's wonder spots in comfortable fashion, and at lowest cost, one should take Niagara's Great Gorge Trip—the Falls and Whirlpool Rapids Route. This magnificent twenty-mile scenic tour is operated jointly by and over the electric lines of the International Railway on the Canadian side and the Niagara Gorge Railroad on the American side.

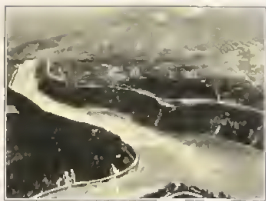
Passengers on Niagara's Great Gorge Trip have their bridge tolls included in their tickets, and are not delayed by immigration and customs requirements,

such as obtain when crossing on foot or by private vehicle. Leaving the Great Gorge Route Terminal at the foot of Falls Street, or the International Railway Terminal on Riverway, opposite Prospect Park, these cars skirt the New York State Niagara



Airplane view of the Falls of Niagara taken from above the Falls View Bridge

Reservation and cross to Canada by way of the Falls View or Upper Steel Arch Bridge. This bridge is 12,40 feet long, 47 feet wide, and 190 feet above the water level. As



Famous Niagara Gorge and Whirlpool, included in Niagara's Great Gorge Trip

Niagara's Great Gorge Trip cars slowly cross to Canada there unfolds one of the grandest and most sublime views of the Falls.

At the Canadian shore the cars turn upstream, traversing beautiful Queen Victoria Park. A stop is made at the Rectory, operated

by the Park Commission and located close to the tower from which the giant searchlights nightly illuminate both Falls. Next comes Table Rock, at the brink of the Canadian end of the Horseshoe Fall. A stop-over may be made here by those who would roam the delightful gardens of the park or take the trip down into the Scenic Tunnel back of the Horseshoe Fall.

From Table Rock the cars run downstream to Queenston, the tracks lying close to the river bank. Niagara's Great Gorge Trip passengers enjoy a constantly changing panorama of the colorful Gorge and the roiling river.

Just below the Michigan Central and the Lower Arch bridges, the Gorge narrows. Here the deep and silent waters of the middle pool are caught in the clutch of the roaring Whirlpool Rapids that culminate in the Whirlpool itself.

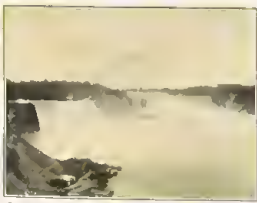
Cars stop at both terminals of the Aerial Cableway across the Whirlpool. This unique trip makes possible an actual bird's-eye view of the Whirlpool's heaving, vortexed surface—60 acres in extent and 200 feet deep.

Circling the Whirlpool, a perfect scenic poem greets the eye—a charming vista of the river framed by stately trees. There are two rivers in the picture—one advancing and one retreating; nor is this a mirage. One is the upper stream pouring its burden of water into the seething caldron; the other is the lower river carrying the escaping torrents on toward the sea.

The next stops at Niagara Glen. This spot of surpassing beauty interests all lovers of nature. It abounds in rare plants, ferns and flowers, and a wealth of unusual rock formations. Shelters



Passing Whirlpool Rapids



Panoramic view of American and Horseshoe Falls, as seen from Niagara's Great Gorge Trip cars

CMA (S&A) J. J. Jordan 7-26

and tree accommodations make this a deservedly popular picnic ground, while shady walks and cozy dells make an almost universal appeal. A short distance below Niagara Glen the cars pass the Queenston Plant of the Hydro Electric Power Commission of Ontario. Then come Queenston Heights, where the visitor may stop at the renowned Brock Monument, 185 feet high, erected 1853 (rebuilt 1870), to the memory of the famous British General, Sir Isaac Brock, who fell in battle on these heights in the War of 1812.



The "Big Wave" in the Whirlpool Rapids as seen from Niagara's Great Gorge Trip cars

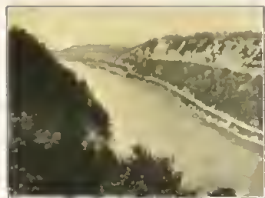
The gradual and easy descent from the heights discloses a cyclorama—the sweeping plain, dotted with vineyards and orchards, that borders the lower river, and the villages of Queenston and Lewiston in the foreground.

The return to the American side is over a suspension bridge, first erected just below the Falls, then taken down and re-erected between Lewiston and Queenston. This bridge marks the bead of navigation on the lower river, the Toronto steamers of the Canada Steamship Lines receiving and discharging passengers at both villages.

This region is rich in historic interest. Fort Niagara, on Lake Ontario, with its castle and blockhouse is but a short distance away. It is reached by a bus side trip that takes the traveler past the old Frontier House where J. Fenimore Cooper lived while writing "The Spy," and through the famous Youngstown fruit belt.

From Lewiston the return to Niagara Falls is through the Great Gorge, close to the water's edge all the way, amid scenes of imposing grandeur. The thrilling trip now defies description. En route, historic Devil's Hole is passed. Here a British caravan and a company of soldiers were ambushed and massacred by the Indians in 1763, the entire company being driven over the cliff to their death on the rocks below. Devil's Hole now forms part of the New York State Niagara Reservation.

The Great Gorge Route pursues a winding course, following the contour of the river bank. A turn in the stream brings the broad ex-



Niagara's Great Gorge Trip at the lower river's edge follows the contour of the cliff. Highway is several hundred feet back from the Gorge.

pense of the Whirlpool into view. At close range this is an entrancing spectacle, never to be forgotten. Passing on, the Whirlpool Rapids' churning, tossing, foaming waters hold all spellbound in awe and admiration. Niagara's Great Gorge Trip cars stop at the most tumultuous portion of the Rapids, permitting passengers to photograph the Big Wave.

Reluctantly leaving this stupendous and superb natural show, the traveler continues his trip, the car winding up the long, easy ascent to the top of the cliff. Midway up the slope the Great Cataracts appear, framed in the arch of the Falls View Bridge, a fitting finale to the most magnificent scenic trip in America.

Once more in the City of Niagara Falls, all cars stop at the main entrance to The Niagara Falls Power Company, where guides are provided free for an interesting trip through the world's greatest hydro electric power plant. From here passengers may continue the trip, alighting at railway station, hotel or terminal, as they desire.

General Information

Visitors to Niagara Falls can easily find their way around the city, as the principal hotels, restaurants, garages, and terminals are within four blocks of the Great Gorge Route Terminal at Falls Street and Riverway. Here every comfort and convenience are provided for the traveler, and in the same building is the Chamber of Commerce with its Information Bureau.

Less than a block down Riverway is the International Railway Terminal, opposite Prospect Park which is a part of the New York State Reservation at Niagara. Within a few hundred feet of these terminals are the American Rapids, the stairway and elevator to the foot of the American Fall, bridge to Goat Island, and the Falls View or Upper Steel Arch Bridge, over which the cars of Niagara's Great Gorge Trip cross to Canada.

The distinctive aluminum and vermilion cars of Niagara's Great Gorge Trip run down Falls Street, leaving the terminals every fifteen minutes during the summer months. Frequent service is maintained *daily* throughout the balance of the year.

FARES

	ROUND TRIP
Niagara's Great Gorge Trip	\$1.50
Niagara's Great Gorge Trip, including Scenic Bus Lines' Trip through Niagara State Reservation and Goat Island	2.00
Illumination Specials (summer evenings)75

NOTE—Prior to 1927, Niagara's Great Gorge Trip was called the "Niagara Gorge Belt Line."

Information for Motorists

Visitors arriving at Niagara Falls by automobile will no doubt welcome a change from motoring, and also relief from the customs and immigration requirements when crossing to and from Canada with their cars. We have therefore provided parking facilities in the space between the Great Gorge Route Terminal and Riverway.

Purchasers of tickets for Niagara's Great Gorge Trip may park their cars here free for four hours, if they wish, thus allowing ample time for the trip, which takes a minimum of two hours but which may be extended by stopping over at the various points of interest.

As there is no highway through the Great Gorge, this trip cannot be duplicated in an automobile.

Of Interest to Tourists

The Niagara River carries the waters of Lake Erie a distance of 37 miles to Lake Ontario, with a total drop of 3.26 feet. Between Lake Erie and the mouth of the Falls there is a 65 foot drop; the Falls averages 164 feet, and the drop through the remaining 15 miles from the Falls to Lake Ontario is 97 feet.

The total stream flow is about 1,500,000 gallons per second, of which the American Fall, with a crest 1,000 feet long, discharges but 6 per cent. The main channel between Goat Island and Canada carries 94 per cent, discharging it over the 2600-foot crest of the Horseshoe Fall. This causes an average elevation of 6 feet at the apex or head of the Horseshoe Fall. The main pool, about 150 feet deep, depth through lower rapids, approximately 25 feet.

The power plants at Niagara Falls have a total installed capacity of approximately 1,400,000 horsepower. Due to the restrictions in the use of water, the maximum operating output is restricted to about 1,085,000 horsepower.

The Niagara Reservation Bus Service operates a fleet of luxurious new wide-plate-glass windows, combining the comfort and protection of a closed car with the unrestricted vision of an open vehicle. These buses leave the Great Gorge Route Terminal and enter the Reservation, where after a short stop they proceed to view the American Fall, they cross to Goat Island, Stops are made at Luna Island, Cave of the Winds, Horseshoe Fall and the Three Sister Islands. Round trip, 30 cents.

Most of the Motor Steamers, including rubber suit, 75 cents
Cave of the Winds, including rubber suit and guide, \$1 00

Scenic Tunnel, Table Rock (Canadian side, including rubber suit and guide, \$1.00.

Aero Car over the Whirlpool, one way 50 cents, round trip 75 cents.

NIAGARA'S GREAT GORGE TRIP TICKET AGENCIES

Albany, N. Y.
American Express Co., 33 N. Pearl St.
Atlanta, Ga.
American Express Co., 20 Lukey St.
Meyer's Tour Co., 324 Highway Bldg.
Baltimore, Md.
American Express Co., 132 W. Lafayette St.
Commercial Bank, Pratt St. and Market Place
Boston, Mass.
American Express Co., 5 N. Calvert St.
Birmingham, Ala.
American Express Co., 4 N. Ninth 1/2 St.
Boston, Mass.
American Express Co., 333 Washington St.
Canada Steamship Lines, 15 Water St.
Canada Steamship Lines, 216 Old South Bldg.
Central Tourist Co., 222 W. Washington St.
The Cook & Son, 167 Tremont St.
Mazzetta Tours, 248 Washington St.
R. B. & W. W. Tour Co., 167 Tremont St.
Rice & Ryan and Park St.
Buffalo, N. Y.
American Express Co., 393 Washington St.
East Hill Travel Bureau, 80 Bayview St.
Bryn Mawr, N. Y.
Telegraphic Travel Agency, 350 Fulton St.
East Hill Travel Bureau, 50 Court St.
Buffalo, N. Y.
American Express Co., Main and Erie Sts.
Central & Buffalo Transit Co., 16 E. Eagle St.
Cook & Son Office
Detroit & Cleveland Niv. Co., Dock Office
Lakeland, N. R., 297 Main St.
Lighthouse & R. P. Depot Ticket Office

International Rv. Ticket Office, 7 Terrace
Hotel, Information Bureau

Chicago, Ill.
American Express Co., 70 E. Randolph St.
Canada Steamship Lines, 115 W. Adams St.
Canada Steamship Lines, Via Transit Co.,
110 W. Adams St.

The Cook & Son, 72 East Jackson Bldg.
Chicago, Dairies & Grocery Bldg., 104
Detroit & Cleveland Navigation Co., 102 N.
Michigan Ave.

Power Tours, Reaper Bldg., 105 N. Clark St.
Raymond & Whitcomb Co., 112 So. Dear
Street, 2nd Flr.

Cincinnati, O.
American Express Co., 4th and Race Sts.
Barlett-Trotter, 297 Broadway Bldg.
Canada Steamship Lines, 417 Erie Terminal
Campanella Tour, 115 Erie Terminal

Cleveland, O.
American Express Co., 10th & Erie St.
and Chestnut Ave.

Columbus, O.
American Express Co., 2048 E. 9th St.
Canada Steamship Lines, 945 Union Trust Bldg.
Cleveland & Buffalo Transit Co., Dock
Office-Niagara Co., 3051 E. 9th St.

Dallas, Tex.
American Express Co., 1906 Commerce St.

Denver, Colo.
American Express Co., 1643 1/2 14th St.

Niagara's Great Gorge Trip

The Falls and Whirlpool Rapids Route

There is No Automobile Road Through the Gorge

NIAGARA'S GREAT GORGE TRIP TICKET AGENCIES—Continued

Detroit, Mich.
American Express Co., 25 Fair St. W.
Canada Steamship Lines, 312 Dime Bank Bldg.
Detroit & Cleveland Niv. Co., 150 W.
Lafayette Bldg., 100 W. 7th St.
C. Leitch, 1st National Travel Bureau, 150
W. Lafayette Bldg.
Kubly's Travel Bureau, 3340 Broadway
Harrisburg, Pa.
Monte, meyer, Travel Bureau, 105 Chestnut St.
T. Wood, Inc., 308 N. 2nd St.
Indianapolis, Ind.
American Express Co., 325 S. Meridian St.
Wash. Bank & Trust Co., 237 W. Wash. St.
Jamestown, N. Y.
Jenness, Wrenthall and Northwestern R. R.
Kansas City, Mo.
American Express Co., 1123 McGee St.
Louis H. Golden, 33 No. Duke St.
Louisa, Va.
American Express Co., 21 Haymarket S. W. E.
Raymond & Whitcomb Co., 30 Cockspur St.
London, Ont.
P. B. Clark, 416 Richmond St.
Los Angeles, Cal.
American Express Co., 724 S. Olive St.
The Cook & Son, 315 So. Spring St.
Peck Judd Co., 732 So. Spring St.
Raymond & Whitcomb Co., 418 S. Spring St.
Memphis, Tenn.
American Express Co., 124 Court Square
Minneapolis, Wis.
American Express Co., 356 Broadway
City Bank Travel Bureau, 167 Second St.
Muskegon, Mich.
American Express Co., 610 Marquette Ave.
Montreal, Que.
American Express Co., 521 Philippe St.
The Cook & Son, 52 Catherine St. W.
Horn's, Tour, 95 St. James St. and Windsor
Hotel
New Orleans, La.
American Express Co., 707 Gravier St.
Newark, N. J.
American Express Co., 876 Broad St.
Luzanna R. R., 408 Union Bldg.
Lighthouse Valley R. R., 24 Bedford Place
New York, N. Y.
American Express Co., 65 and 211 Broadway
118 W. 39th St. and 200 E. 4th Ave., 5th
Travel Bureau
Bauer, Tour, 331 Madison Ave.
Bauer's Travel Bureau, 500 Fifth Ave.
Canada Steamship Lines, 110 W. 42nd St.
Continental Travel Co., 118 W. 42nd St.
The Cook & Son, 395 E. 8th Ave. and 245
Broadway
Philadelphia, Pa.
Travel Tourist Co., 142 Fifth Ave.
Gillipie, Kinipry & Beard, 8 & West 40th St.
Hartsh-Bridges, 113 W. 42nd St.
L. W. Reynolds, R. 112 W. 42nd St.
Lighthouse Valley R. R., 112 W. 42nd St.
Lifsey Tour, 327 1/2 Ave.
Mazzetta Tours, Prine, Gorge Hotel, 14 E.
8th St.
Pittsburgh, Pa.
American Express Co., 900 Liberty St.
Canada Steamship Lines, 691 Union Trust Bldg.
Portland, Ore.
American Express Co., 6th and Oak Sts.
Providence, R. I.
Aylworth Travel Service, 36 Weybosset St.
Colonia Tourist Co., 7 Weybosset St.
Quebec, Que.
Hone & Touss, 12 DuFort St.
Rochester, N. Y.
Canada Steamship Lines, 51 Clinton Ave. S.
Salt Lake City, Utah
American Express Co., 24 W. Second South St.
San Francisco, Cal.
American Express Co., Market and 2nd Sts.
The Cook & Son, 128 Sutter St.
Peck Judd Co., 382 Market St.
Frank Tourist Co., 672 Market St.
Raymond & Whitcomb Co., 657 Market St.
Seattle, Wash.
American Express Co., 604 Third Ave.
Peck Judd Co., 771 Third Ave.
Springfield, Mass.
A. C. Wentworth, 12 East Court St.
St. Louis, Mo.
American Express Co., 10th and Locust Sts.
The Cook & Son, 920 Locust St.
St. Paul, Minn.
A. E. Guenther, Hotel Syracuse
Tellico, O.
Commercial Sav. Bk. & Trust Co., Travel Dept.
H. E. Scully, Tourist Agent
Toronto, Ont.
American Express Co., 216 Bay St.
Canada Steamship Lines, 40 Yonge St. & Dock
The Cook & Son, 1306 St. N.
Horn's, Tours, 39 Adelaide St. E.
Vancouver, B. C.
The Cook & Son, 233 George St. W.
Washington, D. C.
American Express Co., 1331 G St. N. W.
Horn's Tourist Agency, 420 15th St. N. W.
Worcester, Mass.
Brown's Ticket Agency, 78 Franklin St.
Healy's Ticket Agency, 18 Pearl St.

Information may also be obtained at the "Ask Mr. Foster" Travel Bureau.
Tickets may be purchased from Agents on the International Railway Co.'s High Speed
Car between Buffalo and Niagara Falls.

Five copies of this folder, and additional literature and information may be had upon application to

LEE H. JONES, Travel Manager
THE NIAGARA GORGE RAILROAD COMPANY
Four Falls St., Niagara Falls, N. Y. 7 Travee, Buffalo, N. Y.

Niagara's Great Gorge Trip

The Falls and Whirlpool Rapids Route

There is no Automobile Road through the Gorge



(C) VILLAGE OF QUEENSTON, ONTARIO (D) VILLAGE OF LEWISTON, NEW YORK
 1. INTERNATIONAL RAILWAY AND GREAT GORGE ROUTE TERMINALS 2. INTERNATIONAL STEEL ARCH BRIDGE 3. QUEEN VICTORIA PARK 4. TABLE ROCK AND SCENIC TUNNEL 5. BRIDGE STREET AND RAILROAD BRIDGES
 6. SPANISH AFRO CAR OVER THE WHIRLPOOL 7. NIAGARA GLEN 8. BROCK'S MONUMENT ON QUEENSTON HEIGHTS 9. QUEENSTON-LEWISTON BRIDGE 10. LOWER RAPIDS AND DEVIL'S HOLE 11. WHIRLPOOL 12. WHIRLPOOL RAPIDS 13. POWER PLANTS OF NIAGARA POWER SYSTEM

(A) CITY OF NIAGARA FALLS, NEW YORK (B) CITY OF NIAGARA FALLS, ONTARIO

Copies of this map, printed on heavy paper for framing, will be supplied free on application to the Ticket Offices

Copyright 1927, Niagara Gorge Railroad Company



Niagara's Great Gorge Trip

THE FALLS and
WHIRLPOOL RAPIDS ROUTE
Niagara Falls, New York