

Carefree Vacations



Glacier National Park

Waterton Lakes Park

Yellowstone National Park

Banff

Jasper Park

Lake Louise



Many Glacier Hotel
Glacier National Park

The hotels of Glacier and Waterton Lakes National Parks are of the attractive Swiss type of architecture designed to harmonize with the rugged Alpine setting of snow-capped mountain peaks. They offer all the essential comforts and modernities of the metropolitan hotel such as steam heat, electric lights, rooms with



Glacier Park Hotel



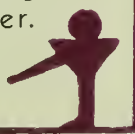
Prince of Wales Hotel
Waterton Lakes Park



Glacier National Park



private bath and with connecting bath and rooms ensuite. The chalets of Glacier Park are of log construction combining the rustic and picturesque with comfort. While not enjoying all the conveniences of the larger hotels, nevertheless they serve as excellent overnight stopping places for the trail rider and hiker.

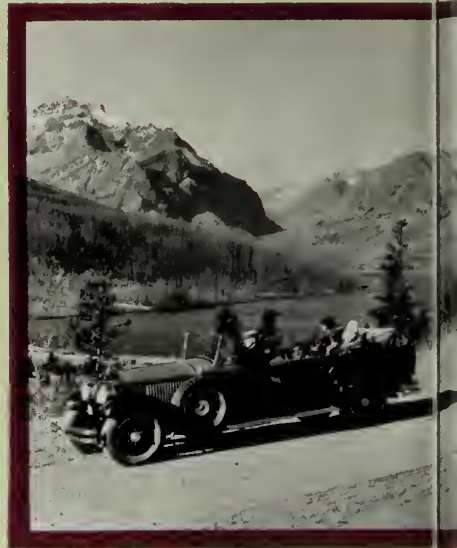




Mount Rockwell and Two Medicine Lake
Glacier National Park



All the scenic possibilities of this international playground and Waterton Lakes National Park are made easily accessible by motor highways, launch boats, lakes and trails through various mountain passes for the benefit of almost everyone who visits.



Rising Wolf Mountain from
Glacier National Park



of this great
of Glacier
onal Parks
y excellent
ites on the
ys and over
er or rider.
s the Parks,



the Blackfeet Highway
al Park



Picturesque Trails from the Hotels
and Chalets of Glacier and Water-
ton Lakes Parks Lead to Tranquil
Mountain Sanctuaries.



Going-to-the-Sun Moun
Glacier Nat



Mountain and St. Mary Lake
National Park



Launch Trips on the Lakes of
Glacier and Waterton Lakes Parks
Lend Further Enchantment to this
International Playground.

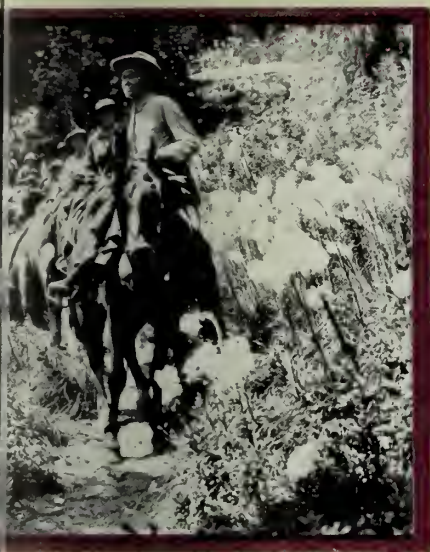


combines the
using the co
launches for
between the h
to accomplish the
the chalet g
of-the-way
tions of wh



Trail Through
Glacier

Several methods of travel
portable motorbuses and
the greater distances be-
tween, and the trails to ac-
cess shorter distances between
points or to visit the out-
lets of the several sec-
tions the hotels are centers.



The Bear Grass Lands
Glacier National Park



Granite Park Chalets
Glacier National Park



Digitized by the Internet Archive
in 2012

<http://archive.org/details/carefreevacation00grea>

Carefree National Parks Vacations

--want to be carefree this summer? Glimpse into that vast and beautiful mountain sanctuary, the United States-Canadian Rockies? Here in settings of rare scenic beauty you will find the rest, relaxation or play you have been searching for. Here are great, modern hotels radiating cheerful hospitality---wide motor highways leading to blue lakes and forest-covered mountains; safe but thrilling trails beckoning to the rider and hiker. Here in this region you will find a carefree vacation amid surroundings repeated nowhere else on earth.

Three delightful tours have been arranged, so scheduled as to permit the maximum

of sightseeing in the minimum of time---Glacier Park only, Glacier Park, Waterton Lakes Park, Banff and Lake Louise (Jasper Park may be substituted if desired for Banff and Lake Louise at approximately the same cost) and Glacier, Waterton Lakes and Yellowstone National Parks. Other optional trips which may be included are Mount Rainier National Park, Mount Baker National Forest and Zion National Park.

Begin planning now to go on one of these Great Northern Carefree National Parks Vacations. Every detail is pre-arranged and taken care of---no travel worries. All you have to do is enjoy yourself.

Tour Number One---Ten Days---Glacier National Park

- 1st DAY** Leave via Southern Pacific "Cascade Limited."
- 2nd DAY** Through the pine-clad Cascade Mountains and the fertile valleys of Southern Oregon by daylight, arriving Portland 4:15 P. M. Leave Portland on the "Empire Builder" 9:30 P. M.
- 3rd DAY** Following the beautiful Pend d'Oreille and Kootenai Rivers, over the Continental Divide through the Great Northern Rockies, arriving Glacier Park Station at 7:02 P. M. Overnight at Glacier Park Hotel.
- 4th DAY** Leave Glacier Park Hotel at 8:30 A. M. for Many Glacier Hotel, arriving 11:05 A. M. The afternoon is available for short side trips by saddle horse, or hiking, for which arrangements may be made at the transportation desk, hotel lobby. Overnight at Many Glacier Hotel.
- 5th DAY** At Many Glacier Hotel, entire day available for scenic side trips to various points of interest. Overnight at Many Glacier Hotel.
- 6th DAY** Leave Many Glacier Hotel at 8:30 A. M. for St. Mary Chalets, arriving 9:25 A. M. Leave via launch at 11:00 A. M. for the 9-mile scenic trip up St. Mary Lake to Going-to-the-Sun Chalets, arrive 11:55 A. M. Afternoon and overnight at this point.
- 7th DAY** Leave Going-to-the-Sun Chalets 8:15 A. M. for St. Mary Chalets, and auto connection to Glacier Park Hotel. Leave on the "Empire Builder" at 12:13 P. M. for the scenic ride westbound.
- 8th DAY** Morning finds us in the beautiful Cascades with giant electric locomotives speeding the "Empire Builder" through the 8-mile Cascade Tunnel, longest in the Western Hemisphere. Arriving at Seattle 8:00 A. M., the day is free for sightseeing. Leave Seattle 11:45 P. M.
- 9th DAY** Enroute through Southern Oregon, following the "Shasta Route," traversing the famous Rogue River Valley.
- 10th DAY** Arrive home.

COST---Tour No. 1

| From | Fare | Pullman | Glacier Park | Total |
|-------------------------|----------|---------|--------------|----------|
| San Francisco - - - - - | \$73.55* | \$33.00 | \$45.25† | \$151.80 |
| Oakland - - - - - | 73.55* | 33.00 | 45.25† | 151.80 |
| Fresno - - - - - | 80.10* | 32.26 | 45.25† | 157.61 |
| Stockton - - - - - | 73.55* | 32.26 | 45.25† | 151.06 |
| Sacramento - - - - - | 73.55* | 32.26 | 45.25† | 151.06 |
| San Jose - - - - - | 74.60* | 33.00 | 45.25† | 152.85 |

Tour Number Two---Twelve Days---Glacier and Waterton Lakes National Parks and Canadian Rockies

- 1st DAY** Leave via Southern Pacific "Cascade Limited."
- 2nd DAY** Through the pine-clad Cascade Mountains and fertile valleys of Southern Oregon by daylight, arriving Portland 4:15 P. M. Leave Portland on the "Empire Builder" 9:30 P. M.
- 3rd DAY** Following the beautiful Pend d'Oreille and Kootenai Rivers, over the Continental Divide, through the Great Northern Rockies, arriving Glacier Park Station at 7:02 P. M. Overnight at Glacier Park Hotel.
- 4th DAY** Leave Glacier Park Hotel at 8:30 A. M. for the 32-mile auto ride to St. Mary Chalets, thence by launch for the 9-mile scenic cruise up St. Mary Lake to Going-to-the-Sun Chalets, arriving 11:55 A. M. Leave 2:00 P. M. for the launch ride back to St. Mary Chalets, where automobiles await us for the 23-mile auto ride to Many Glacier Hotel, arriving 5:05 P. M. Overnight at Many Glacier Hotel.
- 5th DAY** At Many Glacier Hotel, entire day available for scenic side trips to various points of interest by horseback or hiking. Overnight at Many Glacier Hotel.
- 6th DAY** Breakfast at Many Glacier Hotel, leaving by auto at 8:15 A. M. for the 78-mile drive to Prince of Wales Hotel. A stop is made to view the two million dollar Mormon Temple at Cardston, Alberta. Arrive Prince of Wales Hotel 11:50 A. M. Launch trip on Waterton Lake. Overnight at Prince of Wales Hotel.
- 7th DAY** Leave Prince of Wales Hotel by bus at 9:00 A. M. Stopping for lunch at McLeod, arriving at Calgary 4:00 P. M. Overnight at Calgary.
- 8th DAY** Leave Calgary by bus at 9:30 A. M. for the delightful ride through the Canadian Rockies to Banff, arriving at 1:00 P. M. After lunch we continue westward through unequalled mountain sections, arriving Lake Louise at 5:00 P. M. Overnight at Chateau Lake Louise.
- 9th DAY** Leave Lake Louise 8:30 A. M. via bus to Yoho Camp and Emerald Lake to Golden, arriving at 2:30 P. M. (Mountain Time). Leaving via Canadian Pacific Railway at 2:28 P. M. (Pacific Time).
- 10th DAY** Arrive Vancouver 9:30 A. M. The day is free for sightseeing, etc., leaving via Great Northern Ry. at 5:30 P. M. Skirting beautiful Puget Sound we again cross the international boundary line, arriving Seattle 10:45 P. M. and departing at 11:45 P. M.

Rates

The above rates are for lower berth in standard Pullman from Oakland or Sacramento, as the case may be, connections from San Jose, Fresno or Stockton being made at these points. Pullman, if desired, between San Jose and San Francisco or between Fresno or Stockton and Sacramento is additional.

- *Includes \$3.00 extra fare on "Cascade Limited" to Portland.
- †Should hotels instead of lodges be desired in Yellowstone, \$9.00 should be added to the total cost.
- ‡Includes \$1.13 for parlor car seat, Vancouver to Seattle.
- §Single occupancy of a room \$1.50 extra.
- ¶Single occupancy of a room \$3.50 extra.
- ×Single occupancy of a room \$1.00 extra.

11th DAY Enroute through Southern Oregon on "Shasta Limited" following the "Shasta Route" traversing the famous Rogue River Valley.

12th DAY Arrive home.

COST---Tour No. 2

| From | Fare | Pullman | Glacier and Waterton Parks | Bus from Prince of Wales to Golden | Hotel Calgary Lake Louise | Total |
|-------------------------|----------|----------|----------------------------|------------------------------------|---------------------------|----------|
| San Francisco - - - - - | \$94.90* | \$33.71† | \$51.75‡ | \$27.00 | \$14.00 | \$221.36 |
| Oakland - - - - - | 94.90* | 33.71† | 51.75‡ | 27.00 | 14.00 | 221.36 |
| Fresno - - - - - | 97.62* | 33.34† | 51.75‡ | 27.00 | 14.00 | 223.71 |
| Stockton - - - - - | 94.90* | 33.34† | 51.75‡ | 27.00 | 14.00 | 220.99 |
| Sacramento - - - - - | 94.90* | 33.34† | 51.75‡ | 27.00 | 14.00 | 220.99 |
| San Jose - - - - - | 95.34* | 33.71† | 51.75‡ | 27.00 | 14.00 | 221.80 |

Tour Number Three---Fourteen Days---Yellowstone and Glacier National Parks

- 1st DAY** Via Southern Pacific for the journey to Salt Lake. Through the American River Canyon and over the High Sierras passing through Reno.
- 2nd DAY** Crossing Great Salt Lake by rail, arriving Salt Lake City early in the afternoon. Afternoon available for sightseeing. Leave Salt Lake via Union Pacific in the evening.
- 3rd DAY** Arrive West Yellowstone, western entrance of Yellowstone National Park, 7:30 A. M. Leave by motor for the four and one-half day tour of Yellowstone Park, arriving Old Faithful at noon. Overnight at Old Faithful.
- 4th DAY** Leave Old Faithful after lunch via the Continental Divide and Yellowstone Lake, arriving Yellowstone Lake in the afternoon. Overnight at lake.
- 5th DAY** Leave Yellowstone Lake in the morning via Dragons Mouth and Inspiration Point, arrive Grand Canyon of the Yellowstone about noon. A trip by slide down into the canyon is included. Leave Grand Canyon after lunch via Dunraven Pass, arrive Mammoth Hot Springs in the afternoon. Guide trip over the Terrace is included. Overnight at Mammoth Hot Springs.
- 6th DAY** Leave Mammoth Hot Springs after lunch via Norris Geyser Basin, arrive Grand Canyon in the afternoon. Overnight at Grand Canyon.
- 7th DAY** Leave Grand Canyon in the morning for Cody, stopping for lunch at Sylvan Pass Lodge, arrive Cody Inn 4:55 P. M., where connection is made for Glacier National Park leaving via Burlington.
- 8th DAY** Arrive Glacier National Park via Great Northern Railway, 12:13 P. M., leaving 2:00 P. M. by auto for the trip to Two Medicine Lake, viewing beautiful Trick Falls enroute. Thence to Two Medicine Lake for launch trip, returning to Glacier Park Hotel for dinner. Overnight at Glacier Park Hotel.
- 9th DAY** Leave Glacier Park Hotel 8:30 A. M. by motor for St. Mary Chalets, arriving 9:55 A. M. Leave via launch at 11:00 A. M. for the 9-mile scenic trip up St. Mary Lake to Going-to-the-Sun Chalets, arrive 11:55 A. M. Afternoon and overnight at this point.
- 10th DAY** Leave Going-to-the-Sun Chalets at 8:15 A. M. for St. Mary Chalets and auto connection to Glacier Park Hotel. Leave on the Empire Builder at 12:13 P. M. for the scenic ride to Belton, Montana, arriving 2:13 P. M. Leave Belton at 9:20 P. M. for Lake McDonald Hotel at the head of beautiful Lake McDonald, arriving 3:10 P. M. Afternoon and overnight at this point.
- 11th DAY** Leave Lake McDonald Hotel at 8:15 A. M. for the spectacular auto trip to Logan Pass at the summit of the Continental Divide, returning at 11:45 A. M. Leave Lake McDonald Hotel at 12:55 P. M. for Belton, Montana, arriving 1:45 P. M. Leave on the Empire Builder at 2:13 P. M. for the scenic ride westward.
- 12th DAY** Arrive Seattle 8:00 A. M. Balance of day for sightseeing. Leave at 11:45 P. M.
- 13th DAY** Enroute through Southern Oregon on "Shasta Limited," following the picturesque Shasta Route, traversing the famous Rogue River Valley.
- 14th DAY** Arrive home.

COST---Tour No. 3

| From | Fare | Pullman | Yellowstone Park | Glacier Park | Total |
|-------------------------|---------|---------|------------------|--------------|----------|
| San Francisco - - - - - | \$80.28 | \$35.25 | \$45.00¶ | \$41.75× | \$202.28 |
| Oakland - - - - - | 80.28 | 35.25 | 45.00¶ | 41.75× | 202.28 |
| Fresno - - - - - | 86.83 | 34.13 | 45.00¶ | 41.75× | 207.71 |
| Stockton - - - - - | 80.28 | 34.13 | 45.00¶ | 41.75× | 201.16 |
| Sacramento - - - - - | 80.28 | 34.13 | 45.00¶ | 41.75× | 201.16 |
| San Jose - - - - - | 81.33 | 35.25 | 45.00¶ | 41.75× | 203.33 |

Optional Trips

- Rainier National Park - - From Tacoma by motor, two days, \$18.00 in bungalow tents; \$19.50 in hotels (all expense).
- Mount Baker Lodge - - From Seattle to Bellingham by rail, thence motor, two days, \$14.50 in cabins; \$16.00 in main hotel (all expense).
- Zion National Park - - - From Salt Lake City by motor, seven days, \$130.00 (all expense). In connection with Tour No. 3 only.



1. The giant redwoods of Northern California.
2. Mount Rainier and Reflection Lake.
3. Mount Baker and Chain Lake.
4. Great Northern trains are operated electrically in the Cascades.
5. The Flathead River follows the boundary of Glacier National Park.
6. Tower Bridge, Bryce Canyon, on the Zion Park Tour.

1. Banff Hotel, in the heart of the Bow Valley, surrounded by imposing mountain peaks of the Canadian Rockies.
2. Lake Louise, calm and serene, an exquisite setting of rare beauty in the Canadian Rockies.
3. Mt. Edith Cavell and Lake Cavell in Jasper Park, Canada.
4. Old Faithful Geyser and Old Faithful Inn, Yellowstone National Park.





Gunsight Lake

General Information

Tours shown in this folder include railroad fare and Pullman fare, also transportation, hotel accommodations and meals while in the National Parks, in fact virtually all necessary items of expense. This leaves the way clear for a carefree, wholly enjoyable vacation experience without concern as to tickets, baggage, timetables and other travel details. You also know before you start approximately what your vacation is going to cost you. For further information, additional illustrated literature or to make reservations, apply to

R. G. DeGuire
City Passenger Agent

F. E. Howell
Traveling Passenger Agent

A. L. Scott
General Agent, Passenger Department

679 Market Street

San Francisco, California

Telephone Sutter 6051-6052

Great Northern Railway

